

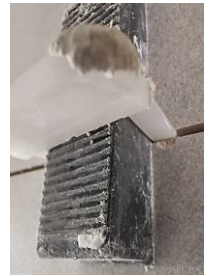
## LEVELING SYSTEM

### ENAMEL BREAKING IN RECTIFIED TILES

When we are talking about walltiles and installation systems, we must take into account the following considerations:

- BIII absorption Group materials, absorption greater than 10%.
- More fragile.
- Rectified, they have a micro-bevel (minimum bevel).

The main problem observed comes at the edge of tiles, they are very delicate and any slight pressure causes the edge to chip.



## TRADITIONAL SYSTEM

At this systems, the wedges are in contact with the tiles, tightening it can cause chipping, since when tightening the wedge a pressure is generated causing the divider to be less than 90°, tilting the divider and exerting pressure on the bezel.

Inclined divider, putting pressure on the bezel



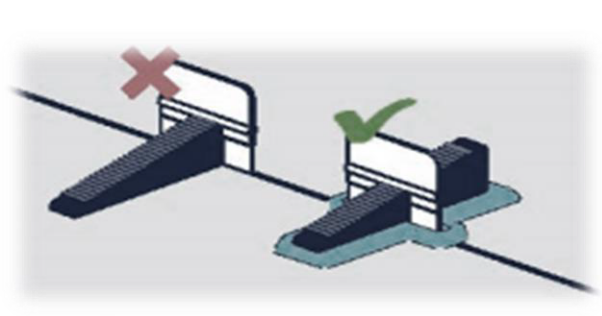
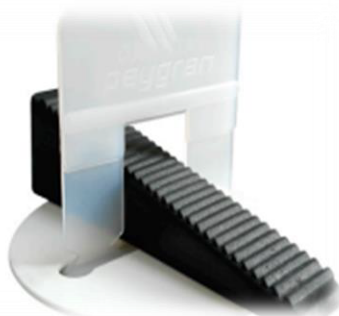
What solution have the manufacturers of leveling systems found to solve this problem that the entire sector presents?

Manufacturers of leveling systems have designed modifications for these types of products.

## LEVELING SYSTEM PROTECTOR

- Designed to protect tiles, especially in case of delicate and thin-thickness ceramic tiles.
- The Protector is placed under the wedge to achieve a perfect finish of the flooring or tiling, eliminating friction in the force between the wedge, the divider and the ceramic.

### USE OF PROTECTOR:



Quality Department, Pamesa Industrial Group